

RICOH Streamline NX v3

Mobile Support Highlights

RICOH
imagine. change.



Mobile convenience

RICOH Streamline NX v3 provides comprehensive mobile support, so users and administrators can be productive without being tied down. Instead of authenticating at a specific MFP, users can authenticate from their mobile devices. With the Secure Print Option and Scan & Capture Option installed, mobile device users can also control print release queues and route captured images to a specific destination. In addition to offering increased mobile productivity for users, Streamline NX can help administrators do their jobs quickly and efficiently — viewing status alerts and managing devices from their iOS, Android™ or Windows® Phone devices.

Familiar user interface

Streamline NX user home screens displayed on Ricoh MFPs are customizable, and you can extend that same look and feel to mobile device users. This consistency can help increase user acceptance and reduce errors, since you don't have to waste time guessing how to carry out familiar processes on a mobile device. You can also tailor the mobile user experience even further by defining a mobile device profile on the server.

Secure document release

With the Secure Print Option, you can use your mobile device to designate an output

device, release jobs from your print queue or delete jobs from your queue if they're no longer needed - all from the Streamline NX Mobile App. Locate an MFP or printer by search command, by taking a picture of a device's QR code. The app can even print from your print queue to compatible non-Ricoh devices. Printing to remote networks is also supported, using Streamline NX's Mobile Intranet Extenders (MIE). Mobile Guest printing supported allowing your visitors to print and be tracked as a Guest Users supported with iOS and Android devices only using a release key.

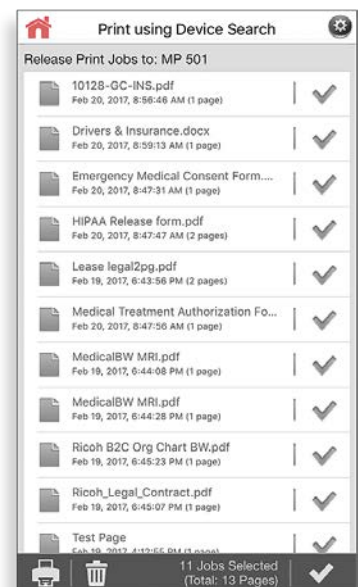
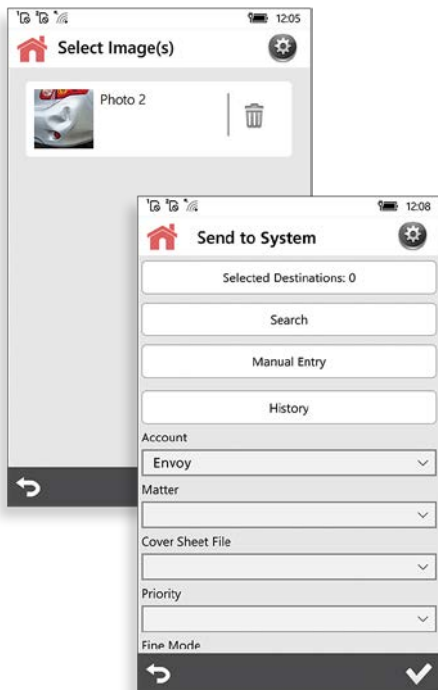


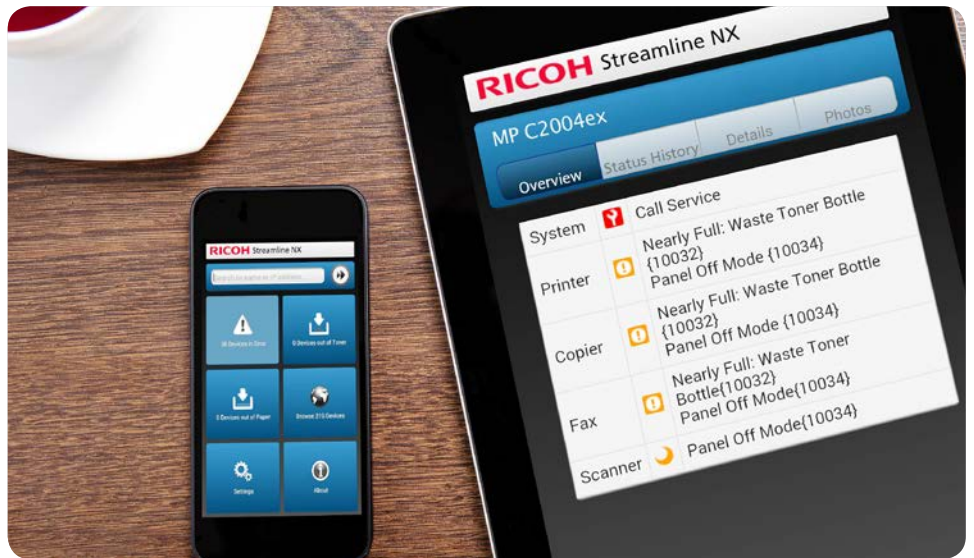
Image capture

Streamline NX's Scan & Capture Option opens up mobile capture and routing processes. Capture images using your mobile device's camera and route them to email, a designated folder or directly into a business system. You also have the ability to enter metadata to help auto-select the right routing destination, populate values for search and retrieval or describe a project. Streamline NX even gives you the flexibility to capture images and data while offline and later submit them to your chosen workflow when reconnected.



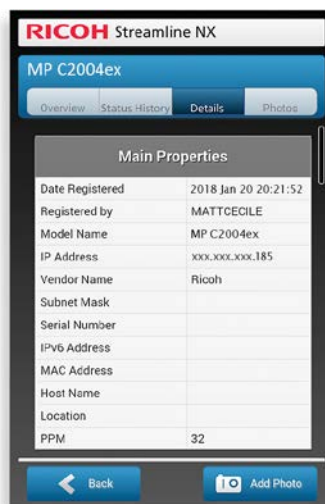
Mobile reporting

Streamline NX can help you account for user activity both from mobile devices and at the MFP. Track mobile printing for employees and extend user accountability to smartphones, tablets and laptops. You can also set user print quotas and empower your accounting staff to better allocate print costs for mobile users.



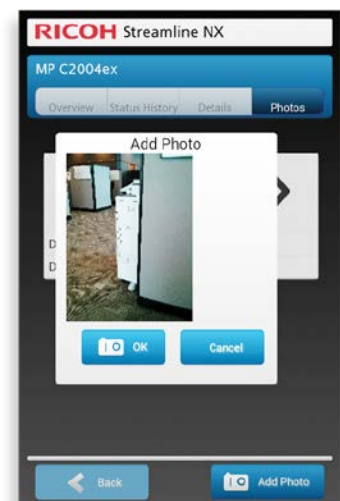
Notifications and alerts

With Streamline NX, your mobile devices can receive important information about your printer fleet — conveniently keeping you informed if any issues arise. Administrators and technicians can receive device error notifications and other alerts right on their mobile devices — helping them to be proactive and to address potential problems even while they are out of the office. Technicians can review device configuration details from anywhere.



Admin on the go

They can also use their mobile devices to capture photos and record additional device information for a visual index of your organization's printer fleet.



This can be used for easy identification by support personnel, and it also enables users to search for a specific MFP or printer from their mobile devices by using a map.

Adobe, Acrobat, PostScript, and PostScript 3 are either registered trademarks or trademarks of Adobe Systems Incorporated in the United States and/or other countries. Microsoft, Windows, Windows Server, Windows Phone, SharePoint, Office 365, Internet Explorer, Excel, Visual C++, and SQL Server are either registered trademarks or trademarks of Microsoft Corp. in the United States and/or other countries.

MINOSHA

URL: <https://www.minosha.in>

MINOSHA INDIA LIMITED (Formerly Ricoh India Limited)

CORPORATE OFFICE: 7th & 11th Floor, Tower 'B', Windsor IT Park, A-1, Sector 125, Expressway, Gautam Budh Nagar, Noida, Uttar Pradesh - 201301
Tel: (0120) 4582900, Service toll free number : 1800 103 0066 & 1800 116 600, Email: ril.info@minosha.in
REGISTERED OFFICE: Unit No. 1132, 3rd Floor, Building No. 11, Solitaire Corporate Park, Andheri Ghatkopar Link Road, Chakala, Andheri East, Mumbai - 400 093
Tel: +91 22 66833000 (5 Lines) Fax: +91 22 67032099.
Bangalore, Chennai, Noida, Gurgaon, Hyderabad, Kolkata, Ahmedabad, Mumbai & Pune.

For more information, please contact: